

**Online Data Supplement**  
**Safety and Reactogenicity of Coronavirus Disease 2019 Vaccination in Severe Alpha-1 Antitrypsin Deficiency**

Oliver J. McElvaney, MD, PhD<sup>1,2,3,4</sup> Brian Cleary, MD<sup>1</sup> Daniel D. Fraughen, MD<sup>1,2</sup> Geraldine Kelly, MBA<sup>5</sup> Oisín F. McElvaney, MD, PhD<sup>1</sup> Mark P. Murphy, PhD<sup>1</sup> Peter Branagan, MD<sup>1,2</sup> Cedric Gunaratnam, MD<sup>1,2</sup> Tomás P. Carroll, PhD<sup>1,5</sup> Christopher H. Goss, MD, MSc<sup>3,4,6</sup> Noel G. McElvaney, MD<sup>1,2</sup>

<sup>1</sup> Department of Medicine, Royal College of Surgeons in Ireland, Dublin, Ireland

<sup>2</sup> National Centre for Alpha-1 Antitrypsin Deficiency, Beaumont Hospital, Dublin, Ireland

<sup>3</sup> Seattle Children’s Research Institute, Seattle, Washington, United States

<sup>4</sup> Department of Medicine, University of Washington, Seattle, Washington, United States

<sup>5</sup> Alpha-1 Foundation of Ireland, Dublin, Ireland

<sup>6</sup> Department of Pediatrics, University of Washington, Seattle, Washington, United States

**Supplementary appendix AATD**

| <b>Table of contents</b>   |      |
|--|------|
|  | Page |
| Table of contents  | 1    |
| Supplementary tables   | 2    |
| Table S1. Baseline clinical characteristics of the Pi*MM COPD study cohort   | 2    |
| Table S2. Breakdown of study groups by age and sex   | 3    |
| Table S3. Burden of comorbid disease in the study cohort   | 4    |
| Table S4. Relative risk of COVID-19 vaccine-associated events in Pi*ZZ AATD patients compared to non-lung disease controls | 5    |
| Table S5. Relative risk of COVID-19 vaccine-associated events in Pi*ZZ AATD patients compared to Pi*MM COPD controls       | 6    |
| Table S6. Unexpected events or AESI following administration of ChAdOx1 nCoV-19  | 7    |
| Table S7. Patient-directed event reporting in the study cohort   | 8    |
| Supplementary figures  | 9    |
| Figure S1. Study participant concerns regarding potential for severe adverse events prior to first ChAdOx1 nCoV-19 dose    | 9    |
| Figure S2. Figure S2. Post-vaccination cutaneous events in Pi*ZZ individuals   | 11   |

## Supplementary tables

|                                |             |
|--------------------------------|-------------|
| Number                         | 150         |
| Male                           | 71 (47)     |
| Female                         | 79 (53)     |
| Age (years)                    | 66.1 ± 12.4 |
| Current smokers                | 69 (46)     |
| Never-smokers                  | 0 (0)       |
| Ex-smokers                     | 81 (54)     |
| Vapers                         | 14 (9)      |
| FEV <sub>1</sub> (% predicted) | 57.5 ± 22.6 |
| DLCO (% predicted)*            | 53.2 ± 20.9 |
| Supplemental oxygen            | 13 (9)      |

Data are presented as number (%) or mean ± standard deviation.

\* Data available for n = 142

FEV<sub>1</sub> – forced expiratory volume in 1s

DLCO = diffusing capacity for carbon monoxide

|              | <b>NLD</b> | <b>Pi*MM COPD</b> | <b>Pi*ZZ AATD</b> |
|--------------|------------|-------------------|-------------------|
| Total number | 140        | 150               | 170               |
| <50 years    | 70         | NA                | 81                |
| Male         | 36         | NA                | 41                |
| Female       | 34         | NA                | 40                |
| ≥50 years    | 70         | 150               | 89                |
| Male         | 35         | 71                | 45                |
| Female       | 35         | 79                | 44                |

Data presented as absolute number

NLD – non-lung disease control group

COPD – chronic obstructive pulmonary disease

AATD – alpha-1 antitrypsin deficiency

| <b>Table S3. Burden of comorbid disease in the study cohort</b> |                        |                               |                               |
|---|------------------------|-------------------------------|-------------------------------|
|   | <b>NLD<br/>(n=140)</b> | <b>Pi*MM COPD<br/>(n=150)</b> | <b>Pi*ZZ AATD<br/>(n=170)</b> |
| Hypertension  | 50 (36)                | 63 (42)                       | 64 (38)                       |
| Coronary artery disease   | 22 (16)                | 27 (18)                       | 23 (14)                       |
| Diabetes mellitus   | 14 (10)                | 19 (13)                       | 18 (11)                       |
| Obesity   | 29 (21)                | 36 (24)                       | 31 (18)                       |
| Chronic kidney disease  | 22 (16)                | 19 (13)                       | 17 (10)                       |
| Vasculitis or connective tissue disease                         | 4 (3)                  | 3 (2)                         | 5 (3)                         |
| Neurodegenerative disease                                       | 0 (0)                  | 1 (1)                         | 0 (0)                         |
| Chronic liver disease   | 4 (3)                  | 7 (5)                         | 39 (23)                       |
| Inflammatory bowel disease                                      | 1 (1)                  | 1 (1)                         | 0 (0)                         |
| Solid organ malignancy  | 2 (1)                  | 1 (1)                         | 0 (0)                         |
| Depression  | 5 (4)                  | 10 (7)                        | 7 (4)                         |
| Prior VTE   | 2 (1)                  | 3 (2)                         | 2 (1)                         |

Data presented as number (%)

NLD – non-lung disease control group

COPD – chronic obstructive pulmonary disease

AATD – alpha-1 antitrypsin deficiency

VTE – venous thromboembolism

**Table S4. Relative risk of COVID-19 vaccine-associated events in Pi\*ZZ AATD patients compared to non-lung disease controls**

| Local                  | 1 <sup>st</sup> dose<br>(n=140) |         | 2 <sup>nd</sup> dose<br>(n=136) |         |
|------------------------|---------------------------------|---------|---------------------------------|---------|
|                        | RR (95% CI)                     | p-value | RR (95% CI)                     | p-value |
| Pain                   | 1.02 (0.82 – 1.26)              | 0.89    | 0.89 (0.67 – 1.18)              | 0.42    |
| Mild                   | 1.08 (0.80 – 1.45)              | 0.63    | 0.96 (0.68 – 1.36)              | 0.83    |
| Moderate               | 0.90 (0.52 – 1.56)              | 0.71    | 0.69 (0.33 – 1.44)              | 0.32    |
| Severe                 | 0.82 (0.17 – 4.02)              | 0.81    | 0.80 (0.05 – 12.74)             | 0.88    |
| Swelling               | 0.82 (0.41 – 1.67)              | 0.60    | 0.89 (0.37 – 2.14)              | 0.80    |
| Tenderness             | 0.97 (0.87 – 1.08)              | 0.57    | 0.91 (0.80 – 1.05)              | 0.19    |
| Pruritis               | 0.74 (0.31 – 1.77)              | 0.50    | 1.34 (0.33 – 5.51)              | 0.68    |
| Axillary LA            | 1.37 (0.33 – 5.64)              | 0.66    | 4.02 (0.48 – 34.03)             | 0.16    |
| Erythema               | 0.90 (0.41 – 1.97)              | 0.79    | 1.29 (0.43 – 3.85)              | 0.65    |
| Warmth                 | 0.70 (0.38 – 1.28)              | 0.25    | 0.57 (0.26 – 1.25)              | 0.16    |
| Bruising               | 0.82 (0.32 – 2.14)              | 0.69    | 0.80 (0.24 – 2.72)              | 0.73    |
| Fatigue                | 1.05 (0.84 – 1.32)              | 0.65    | 1.16 (0.90 – 1.50)              | 0.24    |
| Headache               | 1.04 (0.86 – 1.25)              | 0.70    | 0.98 (0.77 – 1.24)              | 0.86    |
| Arthralgia             | 1.06 (0.74 – 1.52)              | 0.74    | 1.36 (0.81 – 2.28)              | 0.25    |
| Myalgia                | 0.79 (0.49 – 1.29)              | 0.35    | 1.15 (0.60 – 2.19)              | 0.67    |
| Nausea                 | 0.70 (0.38 – 1.28)              | 0.25    | 0.91 (0.47 – 1.76)              | 0.78    |
| Fever                  | 0.95 (0.63 – 1.44)              | 0.82    | 0.91 (0.54 – 1.55)              | 0.74    |
| Chills/rigors          | 1.08 (0.77 – 1.52)              | 0.64    | 0.91 (0.47 – 1.76)              | 0.78    |
| <i>Less common</i>     |                                 |         |                                 |         |
| Anorexia               | 0.99 (0.44 – 2.22)              | 0.98    | 1.13 (0.37 – 3.47)              | 0.84    |
| Diarrhea               | 0.55 (0.09 – 3.24)              | 0.50    | 0.54 (0.09 – 3.17)              | 0.48    |
| Vomiting               | 0.82 (0.17 – 4.02)              | 0.81    | NA                              | 0.20    |
| Dizziness              | 1.18 (0.46 – 3.01)              | 0.73    | 0.80 (0.24 – 2.72)              | 0.73    |
| Sweating               | 0.82 (0.30 – 2.29)              | 0.71    | 1.29 (0.43 – 3.85)              | 0.65    |
| Generalized LA         | 0.82 (0.05 – 13.05)             | 0.89    | 0.80 (0.11 – 5.64)              | 0.83    |
| <b>Any local</b>       | 0.98 (0.88 – 1.09)              | 0.70    | 0.96 (0.85 – 1.08)              | 0.50    |
| <b>Any systemic</b>    | 0.95 (0.80 – 1.13)              | 0.59    | 0.97 (0.78 – 1.19)              | 0.74    |
| <b>Symptoms &gt;3d</b> | 1.08 (0.77 – 1.51)              | 0.66    | 0.91 (0.47 – 1.76)              | 0.78    |
| <b>Symptoms &gt;5d</b> | 0.90 (0.41 – 1.97)              | 0.79    | 2.41 (0.25 – 22.95)             | 0.43    |

LA – lymphadenopathy

**Table S5. Relative risk of COVID-19 vaccine-associated events in Pi\*ZZ AATD patients compared to Pi\*MM COPD controls**

| Local                  | 1 <sup>st</sup> dose<br>(n=140) |         | 2 <sup>nd</sup> dose<br>(n=136) |             |
|------------------------|---------------------------------|---------|---------------------------------|-------------|
|                        | RR (95% CI)                     | p-value | RR (95% CI)                     | p-value     |
| Pain                   | 1.09 (0.88 – 1.35)              | 0.45    | 1.04 (0.77 – 1.39)              | 0.81        |
| Mild                   | 1.25 (0.92 – 1.71)              | 0.15    | 1.04 (0.73 – 1.48)              | 0.83        |
| Moderate               | 0.78 (0.47 – 1.31)              | 0.35    | 0.95 (0.43 – 2.09)              | 0.90        |
| Severe                 | 1.32 (0.22 – 7.81)              | 0.76    | NA                              | 0.35        |
| Swelling               | 0.95 (0.46 – 1.96)              | 0.89    | 0.87 (0.37 – 2.03)              | 0.75        |
| Tenderness             | 1.03 (0.92 – 1.17)              | 0.55    | 0.97 (0.84 – 1.12)              | 0.66        |
| Pruritis               | 1.32 (0.48 – 3.63)              | 0.58    | NA                              | <b>0.04</b> |
| Axillary LA            | 1.47 (0.36 – 6.05)              | 0.59    | 1.45 (0.35 – 5.96)              | 0.60        |
| Erythema               | 1.18 (0.51 – 2.71)              | 0.70    | 0.77 (0.31 – 1.95)              | 0.59        |
| Warmth                 | 0.88 (0.47 – 1.67)              | 0.70    | 0.58 (0.29 – 1.25)              | 0.16        |
| Bruising               | 1.41 (0.47 – 4.22)              | 0.53    | 0.72 (0.23 – 2.34)              | 0.59        |
| Fatigue                | 1.16 (0.92 – 1.47)              | 0.20    | 1.19 (0.93 – 1.54)              | 0.16        |
| Headache               | 1.08 (0.90 – 1.31)              | 0.40    | 0.95 (0.76 – 1.20)              | 0.69        |
| Arthralgia             | 1.31 (0.89 – 1.92)              | 0.16    | 1.27 (0.77 – 2.08)              | 0.35        |
| Myalgia                | 0.96 (0.57 – 1.59)              | 0.86    | 1.16 (0.62 – 2.18)              | 0.65        |
| Nausea                 | 0.83 (0.45 – 1.56)              | 0.57    | 1.48 (0.70 – 3.13)              | 0.30        |
| Fever                  | 1.09 (0.71 – 1.67)              | 0.70    | 0.91 (0.54 – 1.52)              | 0.71        |
| Chills/rigors          | 1.08 (0.78 – 1.51)              | 0.64    | 1.23 (0.61 – 2.49)              | 0.56        |
| <i>Less common</i>     |                                 |         |                                 |             |
| Anorexia               | 1.18 (0.51 – 2.71)              | 0.70    | 0.68 (0.26 – 1.77)              | 0.42        |
| Diarrhea               | 0.59 (0.10 – 3.47)              | 0.55    | 0.60 (0.10 – 3.42)              | 0.54        |
| Vomiting               | 0.88 (0.18 – 4.31)              | 0.88    | 1.74 (0.16 – 18.99)             | 0.65        |
| Dizziness              | 1.47 (0.55 – 3.95)              | 0.44    | 1.45 (0.35 – 5.96)              | 0.60        |
| Sweating               | 0.77 (0.29 – 2.08)              | 0.61    | 1.16 (0.41 – 3.27)              | 0.78        |
| Generalized LA         | 0.29 (0.03 – 2.80)              | 0.26    | 0.87 (0.12 – 6.10)              | 0.89        |
| <b>Any local</b>       | 1.01 (0.91 – 1.13)              | 0.79    | 1.01 (0.89 – 1.14)              | 0.88        |
| <b>Any systemic</b>    | 1.03 (0.86 – 1.24)              | 0.73    | 1.06 (0.85 – 1.31)              | 0.61        |
| <b>Symptoms &gt;3d</b> | 1.18 (0.84 – 1.66)              | 0.33    | 0.99 (0.51 – 1.90)              | 0.97        |
| <b>Symptoms &gt;5d</b> | 1.18 (0.51 – 2.71)              | 0.70    | 0.87 (0.18 – 4.24)              | 0.86        |

LA – lymphadenopathy

| <b>Table S6. Unexpected events or AESI following administration of ChAdOx1 nCoV-19</b> |                                 |                                 |                                 |                                 |                                 |                                 |
|--|---------------------------------|---------------------------------|---------------------------------|---------------------------------|---------------------------------|---------------------------------|
|  | <b>NLD</b>                      |                                 | <b>Pi*MM COPD</b>               |                                 | <b>Pi*ZZ AATD</b>               |                                 |
|  | 1 <sup>st</sup> dose<br>(n=140) | 2 <sup>nd</sup> dose<br>(n=136) | 1 <sup>st</sup> dose<br>(n=150) | 2 <sup>nd</sup> dose<br>(n=147) | 1 <sup>st</sup> dose<br>(n=170) | 2 <sup>nd</sup> dose<br>(n=169) |
| Seizure  | 1 (0.7)                         | 0 (0)                           | 0 (0)                           | 0 (0)                           | 0 (0)                           | 0 (0)                           |
| Collapse   | 2 (0.7)                         | 0 (0)                           | 1 (0.7)                         | 0 (0)                           | 1 (0.6)                         | 0 (0)                           |
| Rash   | 2 (1.4)                         | 1 (0.7)                         | 2 (1.3)                         | 1 (0.7)                         | 2 (1.2)                         | 0 (0)                           |
| Anaphylactoid<br>reaction  | 0 (0)                           | 0 (0)                           | 0 (0)                           | 0 (0)                           | 0 (0)                           | 0 (0)                           |
| Anaphylaxis  | 1 (0.7)                         | 0 (0)                           | 0 (0)                           | 0 (0)                           | 0 (0)                           | 0 (0)                           |
| Unexplained bleeding   | 1 (0.7)                         | 0 (0)                           | 1 (0.7)                         | 0 (0)                           | 0 (0)                           | 0 (0)                           |
| Unexplained bruising   | 2 (1.4)                         | 1 (0.7)                         | 0 (0)                           | 2 (1.3)                         | 3 (1.8)                         | 2 (1.2)                         |
| VTE  | 0 (0)                           | 0 (0)                           | 0 (0)                           | 0 (0)                           | 0 (0)                           | 0 (0)                           |
| CVST   | 0 (0)                           | 0 (0)                           | 0 (0)                           | 0 (0)                           | 0 (0)                           | 0 (0)                           |
| Capillary leak<br>syndrome   | 0 (0)                           | 0 (0)                           | 0 (0)                           | 0 (0)                           | 0 (0)                           | 0 (0)                           |

Data presented as number (%)

NLD – non-lung disease control group

VTE – venous thromboembolism

CVST – cerebral venous sinus thrombosis

| <b>Table S7. Patient-directed event reporting in the study cohort</b> |                        |                      |                          |                                      |              |
|---|------------------------|----------------------|--------------------------|--------------------------------------|--------------|
| <b>Pi*ZZ AATD</b>   | <b>ChAdOx1 nCoV-19</b> |                      | <b>BNT162b2</b>          |                                      | <b>Total</b> |
| <i>AE descriptor</i>  | 1 <sup>st</sup> dose   | 2 <sup>nd</sup> dose | 1 <sup>st</sup> booster* | 2 <sup>nd</sup> booster <sup>†</sup> |              |
| Systemic  | 2/103 [2]              | 2/90 [2]             | 1/78 [1]                 | 1/42 [2]                             | 6/313 [2]    |
| Severe <sup>‡</sup> or prolonged                                      | 4/63 [6]               | 2/24 [8]             | 1/32 [3]                 | 0/35 [0]                             | 7/154 [5]    |
| AESI  | 1/6 [17]               | 0/2 [0]              | NA                       | NA                                   | 1/8 [13]     |
| <b>Pi*MM COPD</b>   | <b>ChAdOx1 nCoV-19</b> |                      | <b>BNT162b2</b>          |                                      | <b>Total</b> |
| <i>AE descriptor</i>  | 1 <sup>st</sup> dose   | 2 <sup>nd</sup> dose | 1 <sup>st</sup> booster  | 2 <sup>nd</sup> booster              |              |
| Systemic  | 2/88 [2]               | 3/74 [4]             | NA                       | NA                                   | 5/162 [3]    |
| Severe <sup>‡</sup> or prolonged                                      | 4/50 [8]               | 1/19 [5]             | NA                       | NA                                   | 5/69 [7]     |
| AESI  | 0/4 [0]                | 0/3 [0]              | NA                       | NA                                   | 0/7 [0]      |
| <b>NLD</b>  | <b>ChAdOx1 nCoV-19</b> |                      | <b>BNT162b2</b>          |                                      | <b>Total</b> |
| <i>AE descriptor</i>  | 1 <sup>st</sup> dose   | 2 <sup>nd</sup> dose | 1 <sup>st</sup> booster  | 2 <sup>nd</sup> booster              |              |
| Systemic  | 4/89 [4]               | 1/75 [1]             | NA                       | NA                                   | 5/164 [3]    |
| Severe <sup>‡</sup> or prolonged                                      | 3/49 [6]               | 2/19 [11]            | NA                       | NA                                   | 5/68 [7]     |
| AESI  | 0/8 [0]                | 0/2 [0]              | NA                       | NA                                   | 0/10 [0]     |

Data presented as number who reported an event /total number with an event, [%]

\* Monovalent vaccine

<sup>†</sup> Bivalent vaccine ± quadrivalent influenza vaccine

<sup>‡</sup> FDA Toxicity Grading Scale grade III/IV

AATD – alpha-1 antitrypsin deficiency

COPD – chronic obstructive pulmonary disease

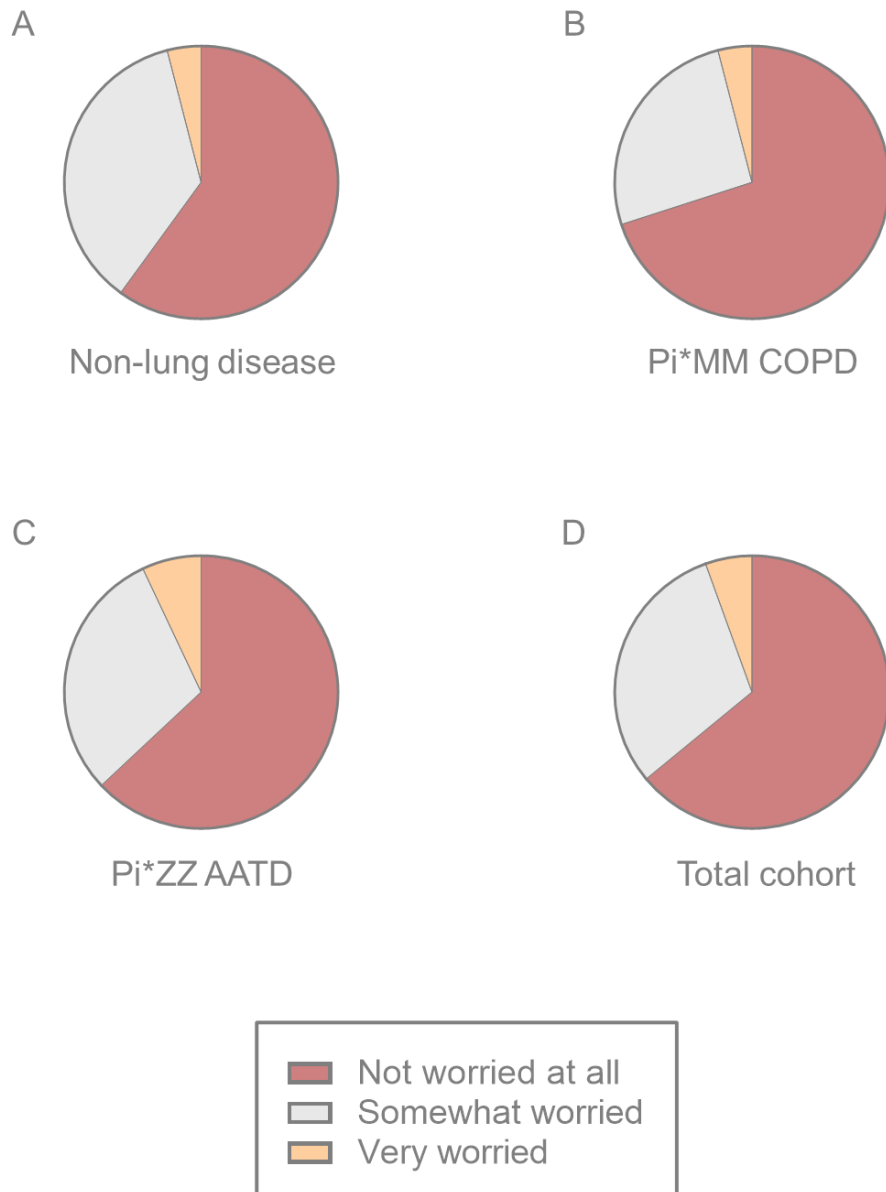
NLD – non-lung disease controls

AE – adverse event

AESI – adverse event of special interest

NA – not applicable

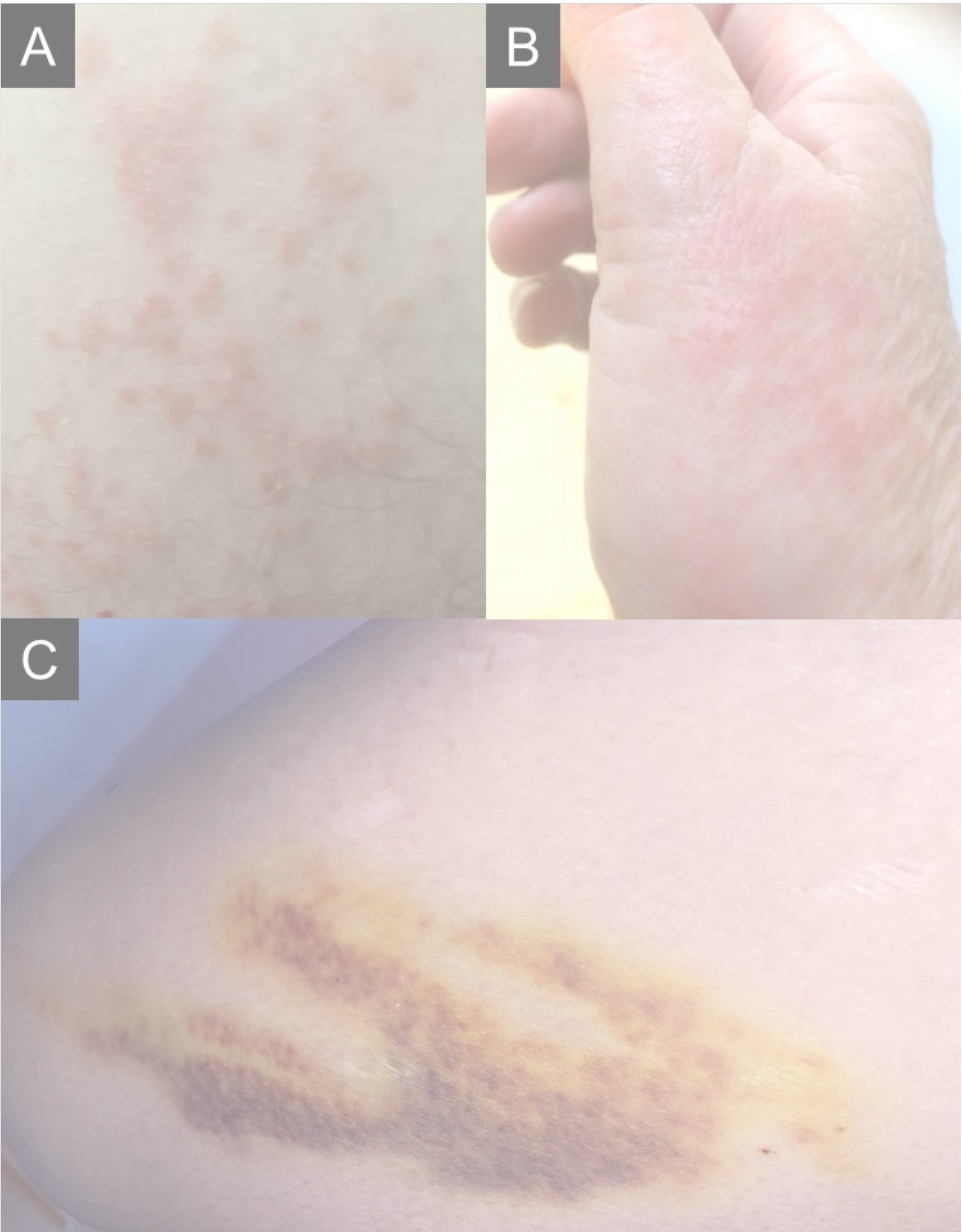
## Supplementary figures



**Figure S1. Study participant concerns regarding potential for severe adverse events prior to first ChAdOx1 nCoV-19 dose.**

Patients with Pi\*ZZ AATD (n=170) and Pi\*MM COPD (n=150) and non-lung disease controls (n=140) were surveyed prior to receiving their first vaccination against COVID-19. Participants were asked to indicate the level of worry regarding potential severe adverse events against a three-level scale (“Not worried at all”/“Somewhat worried”/“Very worried”). Non-lung disease: “Not” = 84/140 (60.0%); “Somewhat” = 51/140 (36.4%); “Very” = 5/140 (3.6%). Pi\*MM COPD: “Not” = 105/150 (70.0%); “Somewhat” = 39/150 (26.0%); “Very” = 6/150 (4.0%). Pi\*ZZ AATD: “Not” = 108/170 (63.5%); “Somewhat” = 50/170 (29.4%); “Very” = 12/170 (7.1%). Total cohort: “Not” = 294/460 (63.9%); “Somewhat” = 138/460 (30.0%); “Very” = 26/460 (5.7%).





**Figure S2. Post-vaccination cutaneous events in Pi\*ZZ individuals.**

Representative images of cutaneous adverse events in the study population. (A) Maculopapular rash. (B) Urticarial rash. (C) Unexplained bruising. Images reproduced with patient permission.